

MARCH 2026

Productsheet AI Pro Pack

Summary

The AI Pro Pack is ICTRecht's professional AI environment for anyone working on legal and compliance matters. It is a suite of specialised AI assistants developed by lawyers and compliance professionals, for lawyers and compliance professionals.

The AI tool supports you in carrying out your daily work. It includes AI tools for contracts, data breaches, general privacy questions, and healthcare, as well as AI and employment law. The goal: spend less time on repetitive tasks, and more time on substantive decision-making.

With the AI Pro Pack, we make carefully selected sources and expertise available for broad use through artificial intelligence. We draw on both public sources and internal knowledge, processes and documents.

The AI Pro Pack has been tested and refined by over 200 organisations during a five-month period. As a result, it is ready for immediate practical use, with no implementation time required. With ICTRecht's AI Pro Pack, content and technology come together seamlessly.

Our AI Pro Pack is hosted by a sovereign European hosting provider with its own data centres, so processing locations and data flows can be clearly explained to your DPO, CISO, management board and regulators. The AI Pro Pack can be used with both European and American AI models, including a client's own models.

AI tooling and ICTRecht's legal expertise

As a pioneer in translating complex digital regulation into practical implementation, ICTRecht has helped organisations embed technological innovation within legally sound frameworks for over twenty years. With this expertise at the intersection of law, technology and governance, ICTRecht continues to support organisations in deploying artificial intelligence safely, ethically and effectively. Now and in the future.

Want to know more? Ready to get started with legal tech? Get in touch: contact@ictrecht.nl.



Wilma van de Meerakker

AI governance & compliance officer bij IJK

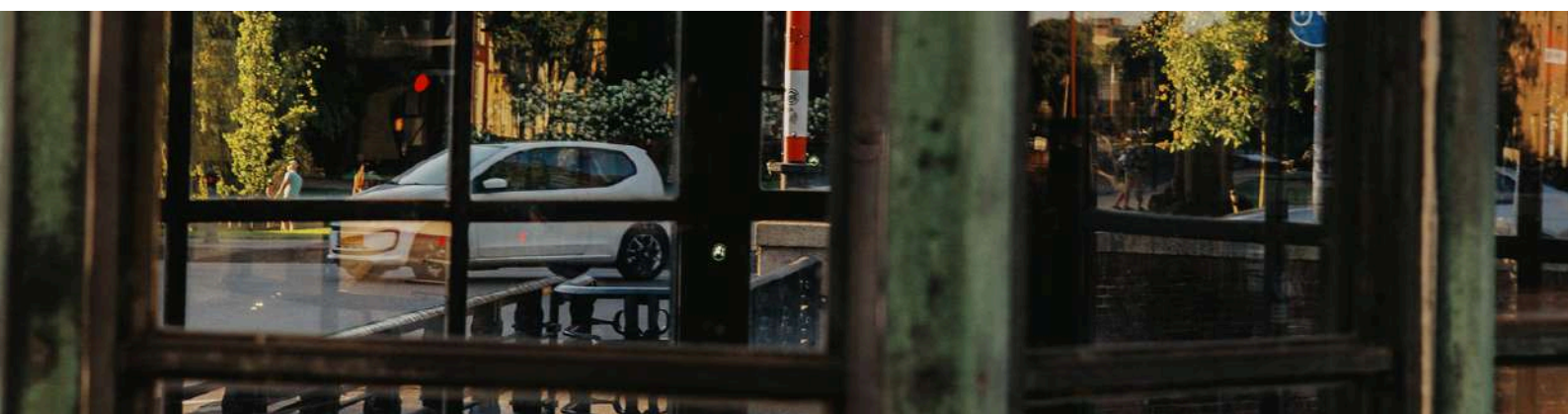
"The AI Pro Pack offers clear added value for legal practice. Thanks to the high-quality data on the input side, the results are reliable, relevant and directly applicable in day-to-day work. At the same time, the user's critical and professional judgement remains essential. The tool serves as a valuable resource that supports me in a variety of ways."



Marjolein van der Heide

Chief Legal Officer bij Uneti-labs

"I'm very impressed with the AI Pro Pack. It took me a little while to get used to the different GPTs, but that soon became second nature and I began to see the strength of this specialised approach. The quality of the answers is noticeably higher than many other tools I've tried, and the AI Pro Pack thinks several steps ahead. You can really tell that ICTRecht has put a great deal of time and care into this. I would recommend it to any lawyer!"



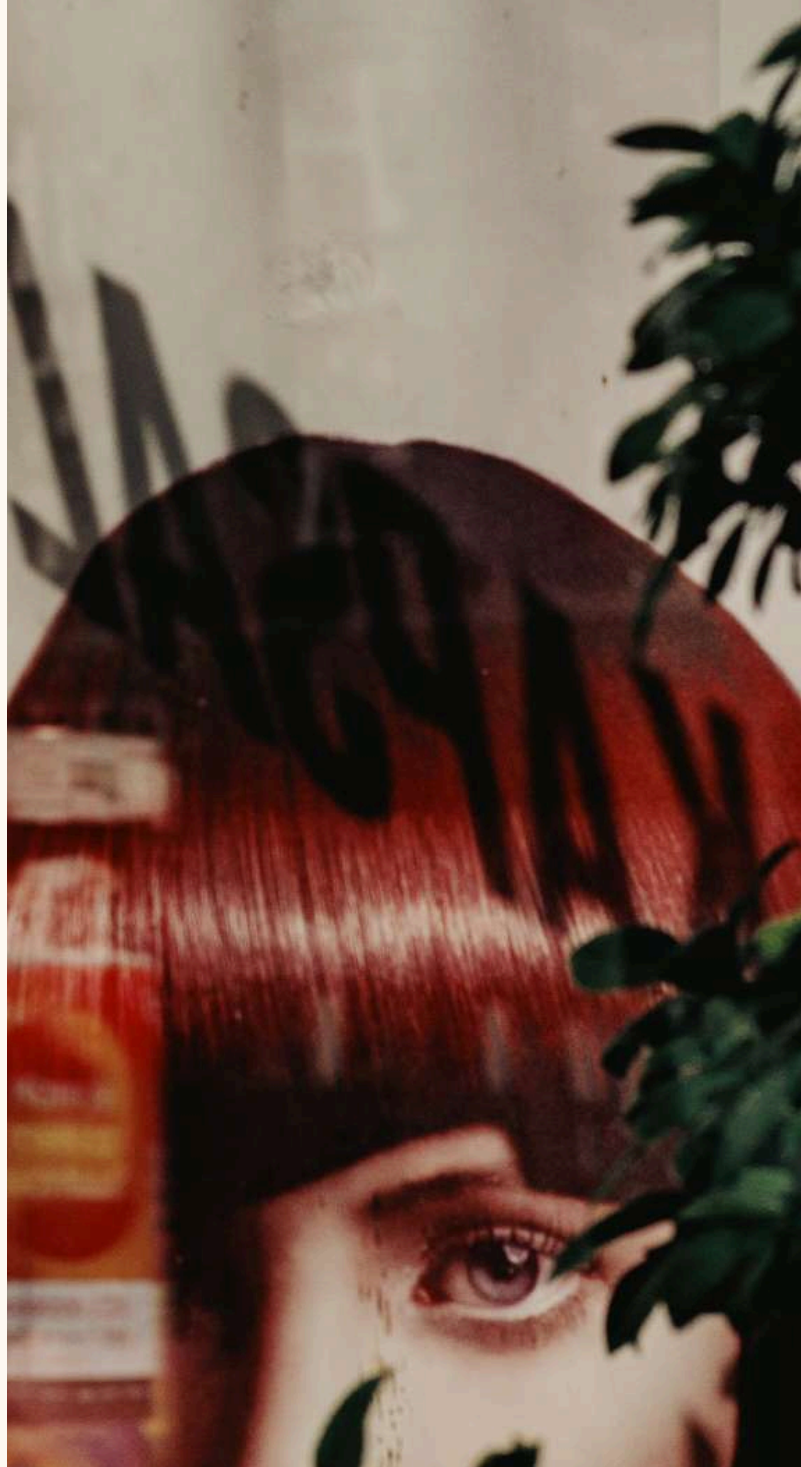
Who is the AI Pro Pack for?

Our AI Pro Pack is designed for:

- DPOs, privacy officers, CISOs, CAICOs and other compliance professionals
- Legal departments, lawyers and accountants
- Procurement teams, sales departments and contract managers
- Organisations with a clear mandate around digital regulation
- HR departments

Typical use cases:

- Reviewing general (procurement) terms and conditions
- Drafting a DPIA
- Preparing an action plan following a detected data breach
- Helping to tighten a limitation of liability clause
- Reviewing and drafting a shareholder resolution
- Assessing whether specific processing activities are permitted
- Evaluating whether a particular AI system may be deployed



Niels Dutij

Privacy and Security Adviser at mbo digitaal

"The Pro Pack saves time and serves as an excellent sparring partner for common privacy issues. It raises the quality of your work by providing a critical second reader who sometimes offers a fresh perspective. Other systems rarely deliver this kind of quality boost, because they lack the right underlying expertise.

The Pro Pack is a highly effective tool for working faster, freeing up your own knowledge for other tasks. That said, it remains very much a tool, not a replacement for a person. I am very pleased with this system."

What does the AI Pro Pack do?

The AI Pro Pack contains a range of specialised AI assistants, including for:

1. Privacy & GDPR

- Supporting you with privacy questions
- Dedicated support for DPIAs
- Analysing data processing agreements
- Helping to draft and refine privacy policies, records of processing activities and internal guidelines

2. AI-governance & AI Act

- Initial assessment of AI applications (risk classes, measures)
- Drafting AI policies and responsible use guidelines for employees

3. Contracts, terms and conditions & resolutions

- Assistance with drafting and amending contract clauses
- Reviewing terms and conditions for known risks or undesirable clauses
- Drafting and reviewing shareholder and board resolutions
- Supporting correspondence with suppliers (vendor management)

4. Policy & documentation

- Drafting and rewriting policies and procedures
- Making legal texts more accessible for non-legal audiences

Our philosophy:

The AI Pro Pack is the toolkit for everyday tasks that lawyers and professionals currently spend most of their time on, but shouldn't have to.

Custom AI assistants (e.g. legislation-specific)

In addition to the standard AI assistants, we can also develop custom applications tailored to specific legislation (such as the AI Act, Data Act or sector-specific regulation) or to your organisation's own policy documents. These custom assistants align closely with your internal standards, processes and document workflows, and can be set up as a separate extension to the AI Pro Pack.



Platform & architecture (high-level overview)

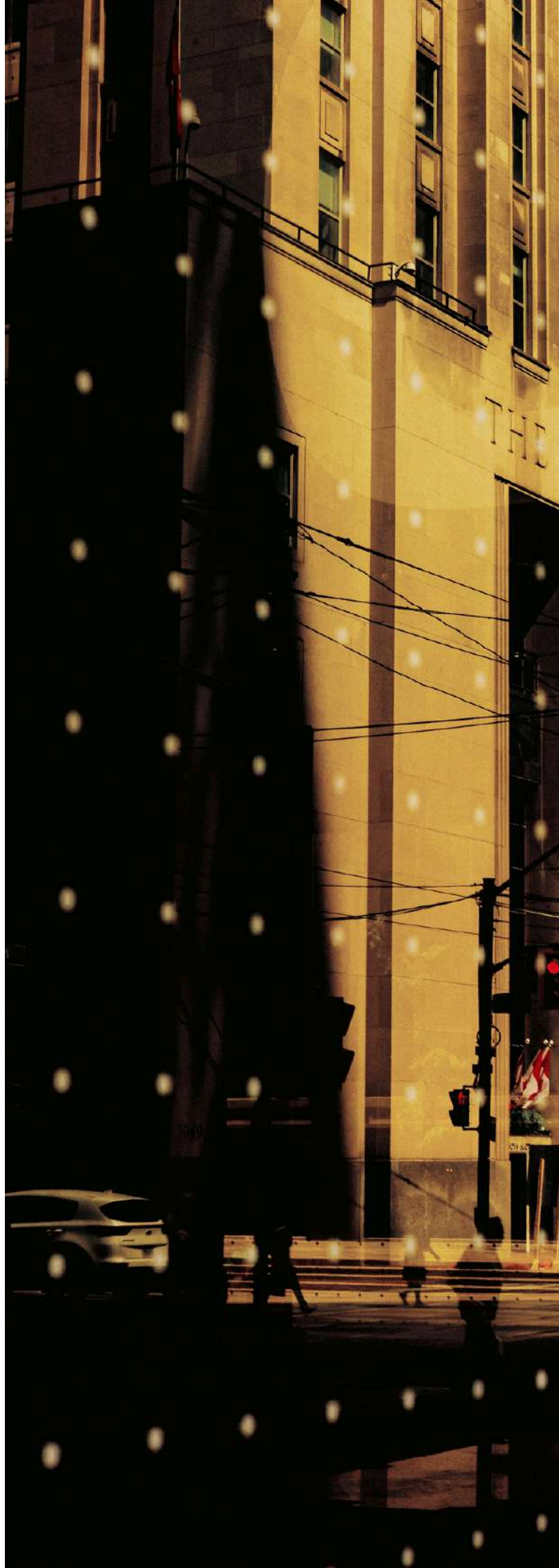
The AI Pro Pack is offered through an Open WebUI environment hosted by Uniserver in the Netherlands. This environment acts as a shielded AI layer in which the AI assistants operate. Your organisation chooses which AI model to use, from American models such as ChatGPT to European options like Mistral or GPT-NL, as well as your own self-hosted models.

The core:

The AI environment (Open WebUI) supports the industry standard for API protocols (Chat Completions) and can therefore securely connect to both cloud models and fully offline or on-premise models. Governance, logging and access management remain configured within your chosen architecture. There is no technical dependency on any single AI model provider.

This allows the AI Pro Pack to combine:

- Access via web environment or integrations
- Option to incorporate your own documents into the environment
- Option to embed the AI Pro Pack in your own Azure/Copilot environment
- EU hosting of the AI environment (Dutch hosting provider, ISO 27001/NEN 7510 certified)
- No mandatory accounts with public AI services
- No data flows outside the EU, unless the chosen AI model is hosted there
- Roles and responsibilities contractually defined
- Data is not used for model training
- A legally vetted AI layer
- Freedom of choice in model provider
- Explainable data flows for your DPO, CISO and management



Processing location & data flows

In all cases, the allocation of roles and processing location is documented in the contractual documentation (agreement + privacy documentation, such as a data processing agreement where relevant).

Standard variant

- Processing takes place in data centres within the EU.
- Customer data is not used to further train the underlying AI models publicly.
- Access to the environment is limited to authorised users within the organisation and ICTRecht (only if and to the extent necessary for management/support).

Alternative variants

- For organisations that already use a specific AI stack (e.g. Microsoft, OpenAI or another provider), the AI Pro Pack can be configured so that:
 - the AI features connect to that existing stack;
 - governance, logging and identity management run through the existing environment.

Important for management/DPO/CISO:

The AI Pro Pack runs in a sovereign European environment with EU hosting and contractually defined roles. Accounts with public (e.g. American) AI services are not required. The Pro Pack works with all popular AI services, both in Europe (Mistral, GPT-NL) and elsewhere (ChatGPT, Copilot). Your organisation is free to choose.

Public AI vs AI Pro Pack

Public AI

No legal fine-tuning

Unknown data flows

Hosting or processing (often) in the United States

No governance

AI Pro Pack

RAG-driven knowledge

Explicit agreements on data flows and responsibility

Sovereign EU hosting

Designed for GDPR/AI Act compliance

Security & Privacy (GDPR/AI Act)

The AI Pro Pack is designed with security and privacy by design as its foundation.

1. Restricted access

- Login via a secure web environment.
- Access is limited to authorised users, with full logging in place.

2. Secure connections

- All traffic between users and the platform runs through encrypted connections (TLS).
- All data is stored in encrypted form.

3. Data minimisation

- Only data necessary for the relevant task is entered or processed.
- You can establish internal guidelines specifying which types of personal data may or may not be processed via the AI Pro Pack.

4. Transparency and accountability

- Clear documentation of which data is processed, for what purpose and on what legal basis (within the client's domain).
- ICTRecht's role is recorded (processor or controller), depending on the chosen setup and use cases.
- The AI Pro Pack is structured so that an AI Act-compliant application can be achieved.

Specific certifications, technical measures (logging, retention settings, etc.) and internal procedures can be detailed in a separate security/privacy memo or added as an annex, tailored to the needs of your management board, DPO or CISO.



Compliance risks and governance

With the AI Pro Pack, we focus explicitly on responsible AI use:

1. The AI Pro Pack serves as a tool, not a decision-maker:

- The human lawyer, DPO or compliance officer remains ultimately responsible.
- AI output is always reviewed before use.

2. The environment helps respect internal policy frameworks:

- AI use takes place within a controlled environment.
- This reduces reliance on public, uncontrolled AI tools.

We can also help you with:

- drafting an AI policy for your organisation;
- conducting a DPIA on AI tool use;
- awareness and training on responsible AI use;
- building and managing Legal AI agents.



Strategic model choice & vendor independence

The AI Pro Pack does not create dependency on a single AI provider. The environment is separate from the chosen underlying AI model, such as ChatGPT, Mistral or GPT-NL. This allows an organisation to adjust its AI strategy without restructuring governance, user management or documentation.

1. No vendor lock-in

The AI layer remains stable; the underlying model is interchangeable. Organisations can start with an EU-hosted model and later switch to a different provider without reimplementing the entire platform. Governance, logging, access management and contractual arrangements remain intact.

2. Integration with existing Azure/Copilot environments

For organisations already working with Microsoft Azure or Copilot, the AI Pro Pack can connect to that existing infrastructure. The language model is then accessed via your own Azure tenant or enterprise environment.

3. Connection to a self-hosted LLM

Larger organisations and (semi-)public institutions increasingly opt for a fully internally hosted model (such as via Ollama). This keeps all processing within their own infrastructure, with no data transfer to external AI providers. With this option, the AI Pro Pack functions as a legal application layer on top of the internal model. The organisation retains full control over data, infrastructure and model management.

- Integration with existing identity and access management (e.g. Entra ID), Apple Business Manager or Univention Nubus.
- Logging and monitoring within your own Microsoft environment.
- Data flows in line with your existing cloud architecture.
- No separate user accounts with public AI services required.



Packages & pricing models

We offer the AI Pro Pack as part of a broader range of AI solutions. At a high level, we distinguish two tracks:

AI Pro Pack (standard subscription)

- ✔ Use of the assistants via our own (sovereign) AI platform.
- ✔ Full access to our collection of assistants: privacy, employment law, contracts, corporate law and IP, with smart tools such as the DPIA assistant and the Data Act checker.
- ✔ Continuous expansion with new AI assistants.
- ✔ Generate commonly used documents (via JuriBlox).
- ✔ Setup of your AI environment (including privacy settings), onboarding, user instructions and support.
- ✔ Trained and maintained with our knowledge and expertise.
- ✔ Periodic updates and content management by ICTRecht.
- ✔ €175 per month per user (10+ users: on request)

[Schedule a demo](#)

AI Custom Pack (bespoke services)

- ✔ Use within an AI environment of your choice: ChatGPT, Microsoft Copilot/Azure, Mistral, GPT-NL or other environments via our own (sovereign) platform.
- ✔ Fully customised AI applications based on your own policies, standards or specific legislation, including integrations.
- ✔ Document generation (via JuriBlox or custom integration).
- ✔ Content developed in collaboration with your organisation.
- ✔ Guidance throughout the entire process: intake, proof of concept, configuration, updates, SLAs.
- ✔ Content updates in consultation with you.
- ✔ Bespoke training.
- ✔ Price on request

[Request a quote](#)

Additional custom AI assistants (for example, legislation-specific or organisation-specific assistants) can be added as an extension to the AI Pro Pack or within a Custom track.

Continuous development & quality assurance

Our AI Pro Pack is not a one-off tool; it is a solution we continuously develop and refine.

- New and updated AIs as legislation and practice evolve (e.g. AI Act, NIS2, sector-specific guidance)
- The substantive output is tested on an ongoing basis by ICTRecht's lawyers and compliance professionals, covering:
 - ◆ legal accuracy;
 - ◆ practical usability;
 - ◆ clarity..
- You also gain access to our AI community, keeping you informed of the latest AI developments and helping you stay ahead in practice.

This means organisations do not have to test an AI configuration from scratch themselves. Instead, they benefit from lessons already learned and improvements already made in practice.



Contact

For more information or a technical/legal explanation (including processing location, data processing agreement and security/privacy documentation):

ICTRecht – AI Pro Pack team

E-mail: contact@ictrecht.nl

website: www.ictrecht.nl/en